

Great Lakes Inter-Tribal Council  
Youth Tobacco Survey  
2000

A Survey of Wisconsin American Indian middle school students

***Prevalence of Tobacco Use***

Prepared by

Great Lakes Inter-Tribal Council Tobacco Project

and

Great Lakes EpiCenter

Great Lakes Inter-Tribal Council

If you would like to reproduce any of the information contained in this report, please use the following citation:

Great Lakes Inter-Tribal Council Youth Tobacco Survey 2000: Prevalence of Tobacco Use, Great Lakes EpiCenter, Great Lakes Inter-Tribal Council, Inc. 2000

For additional copies please contact:

Dawn McCusker, Epidemiologist Great Lakes EpiCenter

Great Lakes Inter-Tribal Council, Inc.

2932 Hwy 47, North

P.O. Box 9

Lac du Flambeau, WI 54538

(800) 472-7207

[mccusker@glitc.org](mailto:mccusker@glitc.org)



## **Background and Methodology**

### **Purpose**

The Great Lakes Inter-Tribal Council Youth Tobacco Survey (GLITC YTS) is a measure of youth tobacco use among Wisconsin American Indian/ Alaska Native (AI/AN) middle school students. The GLITC YTS tracks tobacco use, attitudes and related behaviors among middle school students, as does the Wisconsin Youth Tobacco Survey (WI YTS). In addition, the GLITC YTS also examines AI/AN Tribal affiliation, geographic location, knowledge of traditional and ceremonial use of tobacco, and age initiated smoking. This report addresses the prevalence of tobacco use among Wisconsin AI/AN youth and is the first in a series of reports that will summarize GLITC YTS findings. This report provides baseline data on tobacco use among Wisconsin AI/AN youth.

### *Why GLITC conducted a youth tobacco survey-*

The Centers of Disease Control and Prevention (CDC) electronically randomly selected middle and high schools in Wisconsin, and then they randomly selected 2 classes per school to participate in the WI YTS. Because the representative sample process would not have a large enough American Indian/ Alaska Native representation due to sample size, the GLITC Tobacco Project thought it important to conduct a similar survey of AI/AN youth.

### **Methods**

Tribal schools with all AI/AN enrollment and public schools with large AI/AN student populations were selected to participate in the GLITC YTS. GLITC tobacco project staff contacted tribal offices and asked which schools their children attended. Then GLITC contacted schools and requested the number of American Indian/ Alaska Native students enrolled and total student enrollment. There were no set guidelines for which schools were included. For the most part, neighborhood schools for AI/AN communities on or near reservations were the schools contacted. In cases where a few number of students were enrolled in many schools, the school or schools with the highest number of AI/AN students were selected.

The GLITC Tobacco Project knew ahead of time how many AI/AN students there were at each school, and who the students were, from a list maintained at each tribe by the Indian home school coordinators or the Tribal Education department directors. The Tribes maintain records of all of their students enrolled in the public schools. In most cases, all 6<sup>th</sup> through 8<sup>th</sup> grade students in a particular school were asked to complete the survey. In schools with 55% or less AI/AN enrollment, the AI/AN students were asked to meet outside of the classrooms and only the AI/AN students were requested to complete the survey.

A total of 962 (906 American Indian/Alaska Native) 6<sup>th</sup> through 8<sup>th</sup> grade students from 15 schools were surveyed. Students had the choice whether or not to complete the survey. A passive permission was used for parental approval, meaning that the parents could choose to not allow their child(ren) to not complete the survey.

Surveys were administered by trained school staff or by GLITC Tobacco Project staff depending on school choice. Students responded on a scannable answer sheet. Students were included in the AI/AN population if they identified themselves as American Indian or Alaska Native or identified themselves as belonging to a particular Tribe (on at least one of 5 questions).

### **Great Lakes Inter-Tribal Council Youth Tobacco Project**

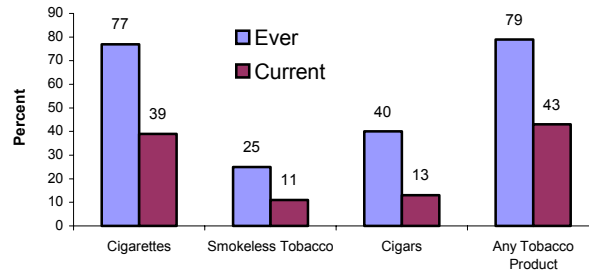
Great Lakes Inter-Tribal Council is a consortium of ten of the eleven tribal governments of Wisconsin and one tribe from the Upper Peninsula of Michigan. The chairpersons from those federally recognized tribes form the board of directors of GLITC. GLITC is a non-profit corporation that administers both state and federally funded programs in many areas.

GLITC has two tobacco focused programs. The primary focus is to educate tribal people and their leadership about the health ramifications of tobacco abuse, the distinction between spiritual tobacco use and addictive habitual use, and the need for the development of tobacco control policies. GLITC receives funds from the CDC and the Wisconsin Division of Public Health to fulfill these activities.

<b>Table of Contents</b>	
Background and Methodology	3
Key Findings	5
Use of Any Tobacco Product	6
Cigarette Smoking	9
Smokeless Tobacco Use (Chew, Snuff, or Dip)	11
Cigar/Cigarillo Use	13
Use of Other Tobacco Products	15
Conclusion	17
Detailed Table	18

# Key Findings

Figure 1: Tobacco Use, GLITC YTS Middle School Students



- ☞ Overall, 79% of middle school students in the GLITC YTS and 46% in the WI YTS have tried some tobacco product.
- ☞ Forty three percent (43%) of middle school students in the GLITC YTS and 16% in WI YTS reported current use of some form of tobacco (used at least one day out of the previous 30 days).
- ☞ Thirty-nine percent (39%) of middle school students in the GLITC YTS and 12% in the WI YTS are current cigarette smokers (smoked at least one day out of the previous 30 days).
- ☞ Middle school students in the GLITC YTS were 3 times more likely than middle school students in the WI YTS (12% compared to 4%) to smoke cigarettes frequently, smoking on at least 20 of the past 30 days.
- ☞ The rate of current smoking increases more rapidly among GLITC YTS middle school students (33% in grade 6 to 57% in grade 8) than WI YTS middle school students (3% in grade 6 to 23% in grade 8).
- ☞ Slightly more GLITC YTS middle school students reported smoking cigars than using smokeless tobacco. In these middle school students, 13% reported smoking cigars and 11% reported using smokeless tobacco. Males were over 3 times more likely to use smokeless tobacco than females and almost 2 times as likely to smoke cigars.
- ☞ By grade 8, a quarter of the GLITC YTS students have tried any form of smokeless tobacco and half have tried smoking cigars.

Note: Current use of “Any tobacco product” includes cigarettes, cigars/ cigarillos/ little cigars, bidis, pipe tobacco, and chewing tobacco/snuff/dip. Ever tried “Any tobacco product” includes cigarettes, cigars/cigarillos/little cigars, chewing tobacco/snuff/dip, bidis, and/or kreteks.

# Use of Any Tobacco Product

## Questions and Definitions

### **Current Use of Any Tobacco Product**

Middle school students were asked:

- \*"During the past 30 days, on how many days did you smoke cigarettes?"
- \*"During the past 30 days, on how many days did you smoke cigars, cigarillos, or little cigars?"
- \*"During the past 30 days, on how many days did you smoke bidis?"
- \*"During the past 30 days, on how many days did you smoke tobacco in a pipe?"
- \*"During the past 30 days, on how many days did you use chewing tobacco, snuff, or dip?"

**The response options were (a) 0 days (b) 1 or 2 days (c) 3 to 5 days (d) 6 to 9 days (e) 10 to 19 days (f) 20 to 29 days (g) All 30 days.**

**Current tobacco use** was defined as a respondent who said he or she used any of the five product classes (cigarettes, cigars, cigarillos, little cigars, bidis, pipe, chewing tobacco, snuff, or dip) on at least one day out of the previous 30 days. A respondent was only counted once no matter how many different products that he or she might have used during the past 30 days.

### **Ever Use of a Tobacco Product**

Middle school students were asked:

- \*"Have you ever tried cigarette smoking, even one or two puffs?"
- \*"Have you ever tried smoking cigars, cigarillos, or little cigars, even one or two puffs?"
- \*"Have you ever used chewing tobacco, snuff, or dip, such as Redman, Levi Garrett, Beechnut, Skoal, Skoal Bandits, or Copenhagen?"

**The response options were (a) Yes (b) No.**

- \*"Have you ever tried smoking any of the following:"

**The response options were (a) Bidis (b) Kreteks (c) I have tried both bidis and kreteks (d) I have never smoked bidis or kreteks.**

**Ever tobacco use** was defined as responding 'yes' to any of the first three questions, or a, b, or, c to the question on bidis and kreteks. Each respondent was only counted once no matter how many different products he or she might have ever used.

*Note: The tobacco products combined to define current tobacco use (cigarettes, cigars, cigarillos, little cigars, chewing tobacco, snuff, dip, pipe, and/or bidis) vary slightly from the tobacco products combined to define ever tobacco use (cigarettes, cigars, cigarillos, little cigars, chewing tobacco, snuff, dip, bidis, and/or kreteks). Kreteks were not included in current tobacco use and pipe smoking was not included in characterizing ever tobacco use.*

## Use of Any Tobacco Product (continued)

### Results

Figure 2: Current use of any tobacco products by gender  
GLITC YTS and WI YTS middle school students

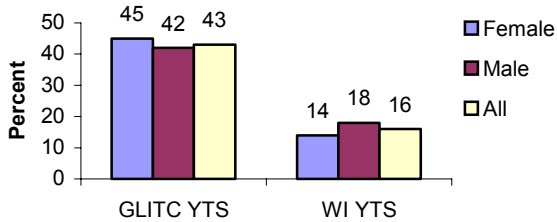
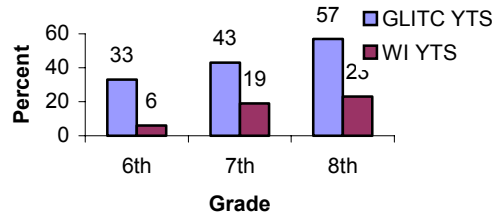


Figure 3: Current use of any tobacco products by grade  
GLITC YTS and WI YTS middle school students



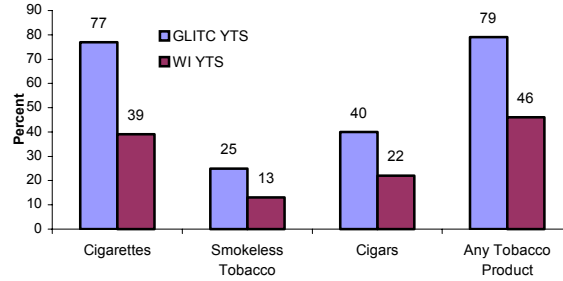
Overall, current tobacco use prevalence is 2.7 times higher for AI/AN middle school students (GLITC YTS) than middle school students from the WI YTS sample. (43% compared to 16%).

Forty-five percent (45%) of the AI/AN middle school girls compared to 42% of AI/AN boys were current users of some form of tobacco. Three times the number of AI/AN girls were current users of any tobacco product than the middle school girls in the WI YTS (45% compared to 14%). There were 2.3 times as many AI/AN boys who were current users of any tobacco product than middle school boys in the WI YTS (42% compared to 18%).

There is a steady increase in the current users of tobacco products from 6<sup>th</sup> to 8<sup>th</sup> grade in both the GLITC YTS (33% in 6<sup>th</sup> grade to 57% in 8<sup>th</sup> grade) and WI YTS (6% in 6<sup>th</sup> grade to 23% in 8<sup>th</sup> grade). However, there are great disparities within each grade level between the GLITC YTS and WI YTS middle school populations. Five and a half times more AI/AN 6<sup>th</sup> graders were current users of a tobacco product than the WI YTS 6<sup>th</sup> graders. This disparity decreases in the 7<sup>th</sup> grade where the AI/AN students have 2 times more current users of a tobacco product than the WI YTS students. Then, among the 8<sup>th</sup> grade students, there are 2.5 more AI/AN current users of a tobacco product than in the WI YTS.

## Use of Any Tobacco Product *(continued)*

**Figure 4: Ever Used Tobacco, GLITC YTS and WI YTS middle school students**



Overall, 79% of the GLITC YTS participants reported trying any type of tobacco product compared to 46% of WI YTS middle school participants. The percent of GLITC YTS participants reporting having tried some form of tobacco is almost double those reporting they are current smokers of some form of tobacco (current users 43% and ever tried 79%).

# Cigarette Smoking

## Questions and Definitions

### Current and Frequent Cigarette Smoking

Middle school students were asked:

\*"During the past 30 days, on how many days did you smoke cigarettes?"

The response options were (a) 0 days (b) 1 or 2 days (c) 3 to 5 days (d) 6 to 9 days (e) 10 to 19 days (f) 20 to 29 days (g) All 30 days.

**Current** cigarette smoking was defined as smoking at least one day out of the previous 30 days.

**Frequent** cigarette smoking was defined as smoking on 20 or more days of the previous 30 days.

### Ever Cigarette Smoking

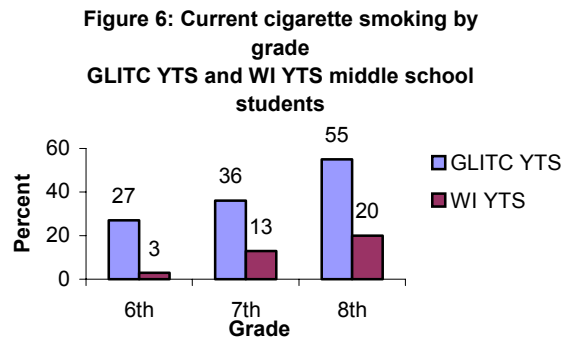
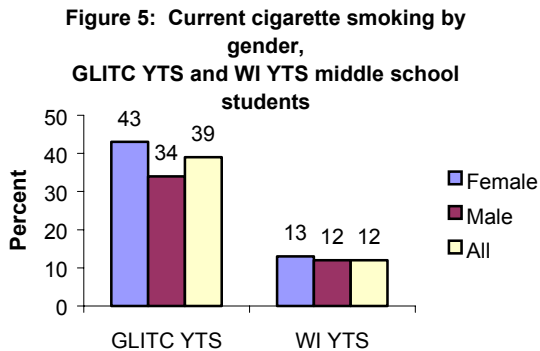
Middle school students were asked:

\*"Have you ever tried cigarette smoking, even one or two puffs?"

The response options were (a) Yes (b) No.

**Ever** cigarette smoking was defined as responding 'Yes'.

## Results



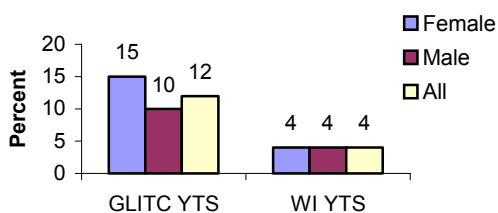
Current cigarette smoking is defined as smoking at least one day of the previous 30 days. Overall current cigarette smoking prevalence for AI/AN middle school students is 3.3 times that of WI YTS middle school students (39% compared to 12%). More AI/AN middle school girls reported currently smoke cigarettes than boys (43% compared to 34%).

There is a disparity in current cigarette use between the GLITC YTS students and the WI YTS middle school students. The current cigarette use of the GLITC YTS students increases two-fold, from 27% in 6<sup>th</sup> grade to 55% in 8<sup>th</sup> grade. Twenty-seven percent

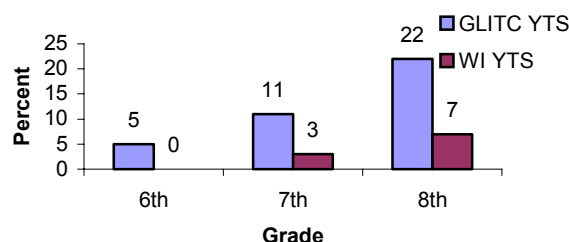
## Cigarette Smoking (continued)

(27%) of the 6th grade students in the GLITC YTS reported currently smoke cigarettes which is 9 times the 6th grade WI YTS smoking rate (3%). By the 8th grade, 2.8 times as many GLITC YTS students currently smoked cigarettes compared to the 8th grade WI YTS students.

**Figure 7: Frequent cigarette smoking by gender  
GLITC YTS and WI YTS middle school students**

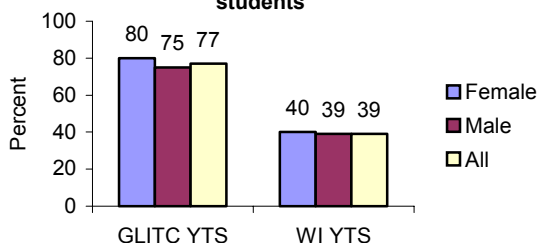


**Figure 8: Frequent cigarette smoking by grade,  
GLITC YTS and WI YTS middle school students**

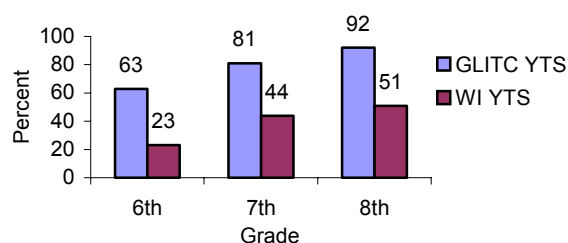


Frequent use of cigarettes is defined as smoking at least 20 of the previous 30 days. Overall, the frequent smoking prevalence for the GLITC YTS students is lower than for current smoking of cigarettes. Frequent cigarette smoking prevalence is 3 times higher for GLITC YTS students than for WI YTS middle school students (12% compared to 4%). More AI/AN girls were frequent cigarette smokers than boys (15% compared to 10%). The percentage of students who are frequent smokers doubles from 6<sup>th</sup> grade to 7<sup>th</sup> grade and doubles again from 7<sup>th</sup> grade to 8<sup>th</sup> grade yet there is a large disparity in frequent cigarette smoking for each grade level between the AI/AN middle school students and the WI YTS middle school students.

**Figure 9: Ever cigarette smoking by gender,  
GLITC YTS and WI YTS middle school students**



**Figure 10: Ever cigarette smoking by grade  
GLITC YTS and WI YTS middle school students**



Overall, 77% of GLITC YTS students and 39% of WI YTS middle school students have ever tried smoking cigarettes. The prevalence of having ever tried smoking cigarettes was close among AI/AN males (75%) and females (80%). Ever tried cigarette smoking among AI/AN students increased from 6<sup>th</sup> to 8<sup>th</sup> grade (60% to 92%). There were 2.6 times more GLITC YTS 6<sup>th</sup> graders and 1.8 times more 8<sup>th</sup> graders compared to WI YTS middle school students, who ever tried cigarette smoking.

# Smokeless Tobacco Use (Chew, Snuff, or Dip)

## Questions and Definitions

### Current and Frequent Smokeless Tobacco Use

Middle school students were asked:

\*"During the past 30 days, on how many days did you use chewing tobacco, snuff or dip?"

The response options were (a) 0 days (b) 1 or 2 days (c) 3 to 5 days (d) 6 to 9 days (e) 10 to 19 days (f) 20 to 29 days (g) All 30 days.

**Current** smokeless tobacco use was defined as using chewing tobacco, snuff, or dip at least one day out of the previous 30 days.

**Frequent** smokeless tobacco use was defined as using chewing tobacco, snuff, or dip on at least 20 or more days of the previous 30 days.

### Ever Smokeless Tobacco Use

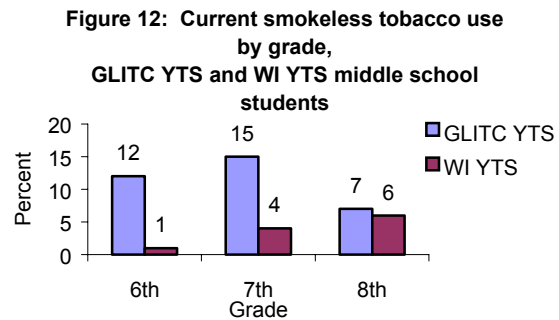
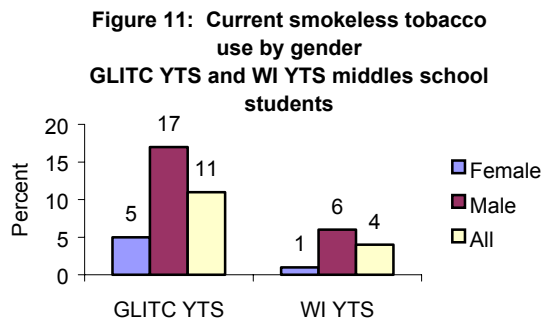
Middle school students were asked:

\*"Have you ever used chewing tobacco, snuff, or dip, such as Redman, Levi Garrett, Beechnut, Skoal, Skoal Bandits, or Copenhagen?"

The response options were (a) Yes (b) No.

**Ever** smokeless tobacco use was defined as responding 'Yes'.

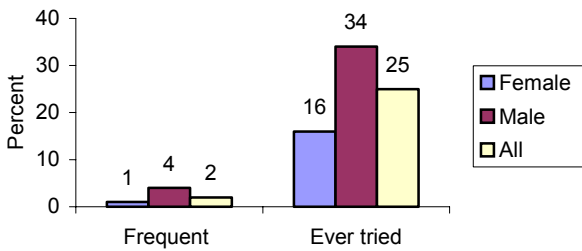
## Results



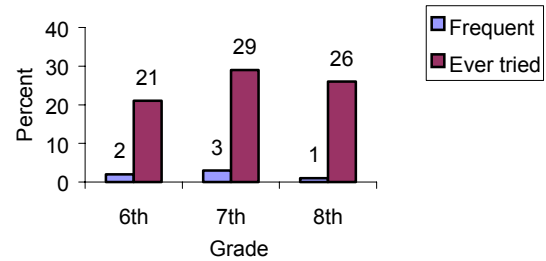
Current use of smokeless tobacco is defined as having used chewing tobacco, snuff, or dip on at least one day of the past 30 days. Overall prevalence of current smokeless tobacco use for GLITC YTS students is much lower than current cigarette smoking, 11% compared to 39%. Although smokeless tobacco use is lower, it is significantly higher than the WI YTS middle school student sample. Males were the predominate current smokeless tobacco users among the GLITC YTS students with 17% current users compared to 5% of females. Additionally, for both boys and girls, the GLITC YTS students had higher percentages of both males and female current smokeless tobacco users than WI YTS middle school students. Current smokeless tobacco use was highest for AI/AN 7<sup>th</sup> graders (15%).

## Smokeless Tobacco Use (Chew, Snuff, or Dip) (continued)

**Figure 13: Frequent and ever tried smokeless tobacco use by gender GLITC YTS students**



**Figure 14: Frequent and ever tried smokeless tobacco by grade GLITC YTS students**



Frequent use of smokeless tobacco was reported by 4% of males and about 1% of females from the GLITC YTS. This compares to 1% of male and no female middle school respondents from the WI YTS. From the GLITC YTS results, it was 7<sup>th</sup> graders who had the highest reported frequent use of smokeless tobacco at 3.3%.

Twice as many males taking the GLITC YTS reported having ever tried smokeless tobacco (34%) compared to females at 16%. Ever having tried smokeless tobacco increased from 6<sup>th</sup> to 8<sup>th</sup> grade (21% to 26%) but was highest at 29% among 7<sup>th</sup> graders.

# Cigar/Cigarillo Use

## Questions and Definitions

### Current and Frequent Cigar/Cigarillo Use

Middle school students were asked:

\*"During the past 30 days, on how many days did you smoke cigars, cigarillos, or little cigars?"

The response options were (a) 0 days (b) 1 or 2 days (c) 3 to 5 days (d) 6 to 9 days (e) 10 to 19 days (f) 20 to 29 days (g) All 30 days.

**Current** cigar, cigarillo, or little cigar smoking was defined as smoking at least one day out of the previous 30 days.

**Frequent** cigar, cigarillo, or little cigar smoking was defined as smoking on 20 or more days of the previous 30 days.

### Ever Cigar/Cigarillo Use

Middle school students were asked:

\*"Have you ever tried smoking cigars, cigarillos, or little cigars, even one or two puffs?"

The response options were (a) Yes (b) No.

**Ever** cigar use was defined as responding 'Yes'.

## Results

Figure 15: Current cigar smoking by gender, GLITC YTS and WI YTS middle school students

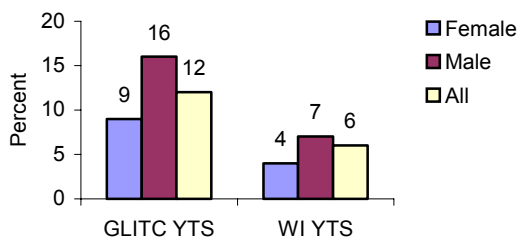
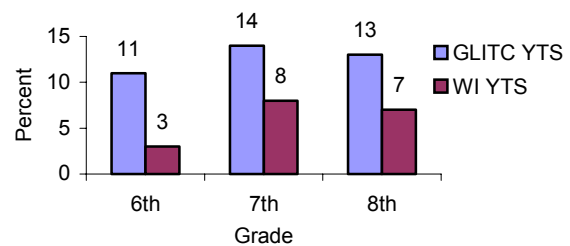


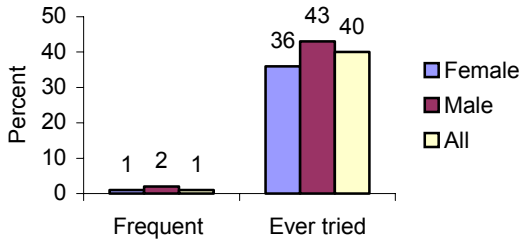
Figure 16: Current cigar smoking by grade, GLITC YTS and WI YTS middle school students



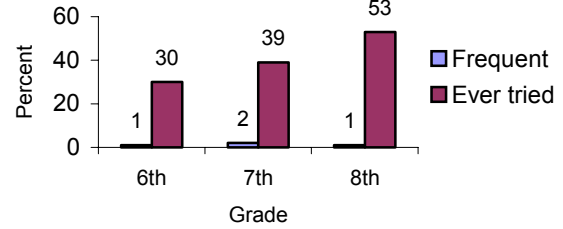
Current cigar smokers are defined as youth who have smoked cigars at least one day out of the past 30 days. Prevalence of cigar/cigarillo smoking is higher for AI/AN males (16%) than females (9%). However, twice as many GLITC YTS students were current cigar smokers compared to WI YTS middle school students. The highest prevalence of current cigar smoking, for AI/AN students was in 7<sup>th</sup> grade (14%).

## Cigar/Cigarillo Use (continued)

**Figure 17: Frequent use and ever tried cigars/cigarillos by gender GLITC YTS students**



**Figure 18: Frequent use and ever tried cigars/cigarillos by grade GLITC YTS students**



Frequent cigar smoking (20 or more days in the previous 30 days) was highest among GLITC YTS males and 7<sup>th</sup> graders (2% each). The WI YTS middle school students did not report frequent use of cigars.

Forty-three percent (43%) of AI/AN males and 36% of AI/AN females reported ever trying cigars. The percent of students ever trying cigars increases among AI/AN students from grade 6 (30%) to grade 8 (53%).

## Use of Other Tobacco Products

### Tobacco in a Pipe

#### Questions and Definitions

##### **Current Use of Tobacco in a Pipe**

Middle school students were asked:

*\*"During the past 30 days, on how many days did you smoke tobacco in a pipe?"*

**The response options were (a) 0 days (b) 1 or 2 days (c) 3 to 5 days (d) 6 to 9 days (e) 10 to 19 days (f) 20 to 29 days (g) All 30 days.**

**Current** tobacco in a pipe smoking was defined as smoking at least one day out of the previous 30 days.

#### Results

Twice as many AI/AN males as females reported current smoking of tobacco in a pipe (12% compared to 6%). Again, the GLITC YTS 7<sup>th</sup> grade students reported the highest current smoking of tobacco in pipes, at 14% (6<sup>th</sup> grade 6% and 8<sup>th</sup> grade 7%).

### Bidis and Kreteks

#### Questions and Definitions

Bidis (or "beedies") are small brown cigarettes from Indian made of tobacco wrapped in a leaf tied with thread. Kreteks are cigarettes made of tobacco and clove extract.

##### **Current Use of Bidis**

Middle school students were asked:

*\*"During the past 30 days, on how many days did you smoke bidis?"*

**The response options were (a) 0 days (b) 1 or 2 days (c) 3 to 5 days (d) 6 to 9 days (e) 10 to 19 days (f) 20 to 29 days (g) All 30 days.**

**Current** bidi smoking was defined as smoking at least one day out of the previous 30 days.

##### **Ever Use of Bidis and Kreteks**

Middle school students were asked:

*\*"Have you ever tried smoking any of the following:"*

**The response options were (a) Bidis (b) Kreteks (c) I have tried both bidis and kreteks (d) I have never smoked bidis or kreteks.**

## **Use of Other Tobacco Products (*continued*)**

**Ever** bidi or kretek use was defined as responding a, b, c. Each respondent was only counted once no matter whether he or she indicated trying bidis, kreteks, or both.

### **Results**

Seven percent (7%) of AI/AN females and 9% of males reported current use of bidis. More GLITC YTS 7<sup>th</sup> graders than any other grade, reported current use of bidis (13%).

Thirteen percent (13%) of GLITC YTS students reported ever trying bidis or kreteks compared to 8% of WI YTS middle school students ever trying bidis or kreteks.

## Conclusion

The information from this report provides baseline information on the prevalence of tobacco use among American Indian/Alaska Native middle school students in Wisconsin. The prevalence levels of tobacco use vary by tobacco product, student gender, and grade level. It is hoped that this information and Tribal specific information provided to the respective Tribes will be used to target prevention and cessation activities to appropriate sub-populations of youth.

This report may be useful for

- Understanding the prevalence of tobacco use amongst AI/AN youth
- Writing grants
- Defining a target population for prevention cessation activities
- Baseline information for program evaluation

## Detailed Table

### Data From the Great Lakes Inter-Tribal Council Youth Tobacco Survey

906 AI/AN Middle School Students		Current cigarette use		Current cigar use		Current smokeless tobacco use		Current use of any tobacco product	
		N=827		N=871		N=869		N=906	
Category		%	95% CI	%	95% CI	%	95% CI	%	95% CI
Sex									
	Female	43.4	±5.0	9.2	±3.2	5.4	±2.7	45.0	±4.9
	Male	34.1	±4.8	15.5	±3.8	17.1	±3.9	41.8	±4.6
Grade									
	6 <sup>th</sup>	27.0	±5.5	11.0	±4.2	11.7	±4.3	33.1	±5.5
	7 <sup>th</sup>	36.4	±5.8	14.3	±4.5	14.7	±4.6	42.6	±5.7
	8 <sup>th</sup>	55.3	±6.6	12.6	±4.8	7.3	±4.4	57.3	±6.4
Total		38.6	±3.4	12.5	±2.4	11.4	±2.3	43.4	±3.3