

## 2009 INFLUENZA IMMUNIZATION ALGORITHMS

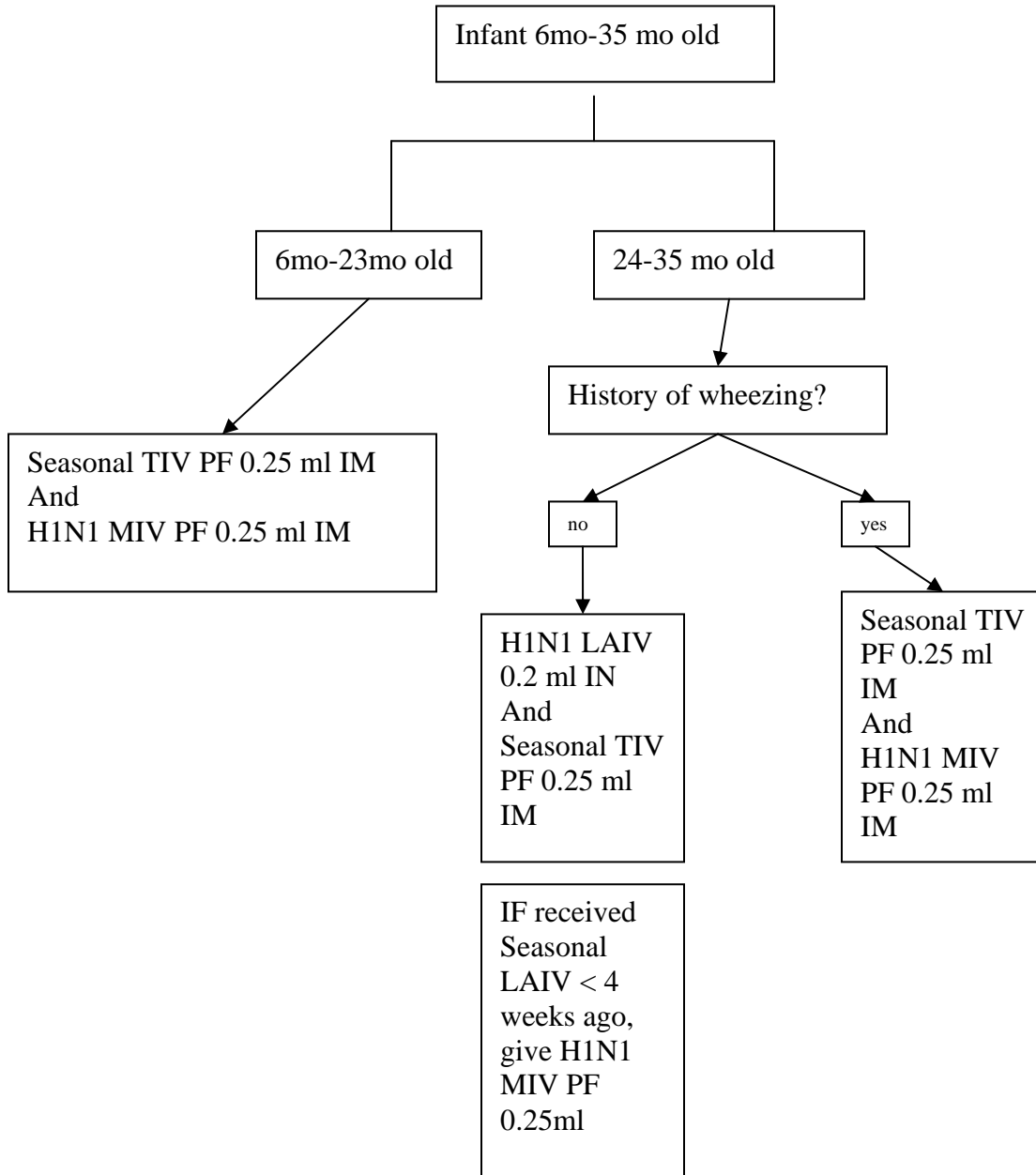
Abbreviations: LAIV- Live Attenuated Influenza Vaccine- Seasonal AND H1N1  
(only approved for use 2-49 yo healthy persons, not in pregnancy)  
TIV- Trivalent Injectable Vaccine- SEASONAL  
MIV- Monovalent Injectable Vaccine- H1N1 only  
PF- Preservative Free

1<sup>st</sup> tier for 2009 H1N1 Vaccine: Patient is 6mo-4 yo  
Patient is 5yo-18yo with high risk medical condition  
Patient is parent of infant < 6mo  
Patient is pregnant  
Patient is Health care worker  
Patient is immunocompromised adult < 65 yo-post transplant, HIV, anti-TNF medications

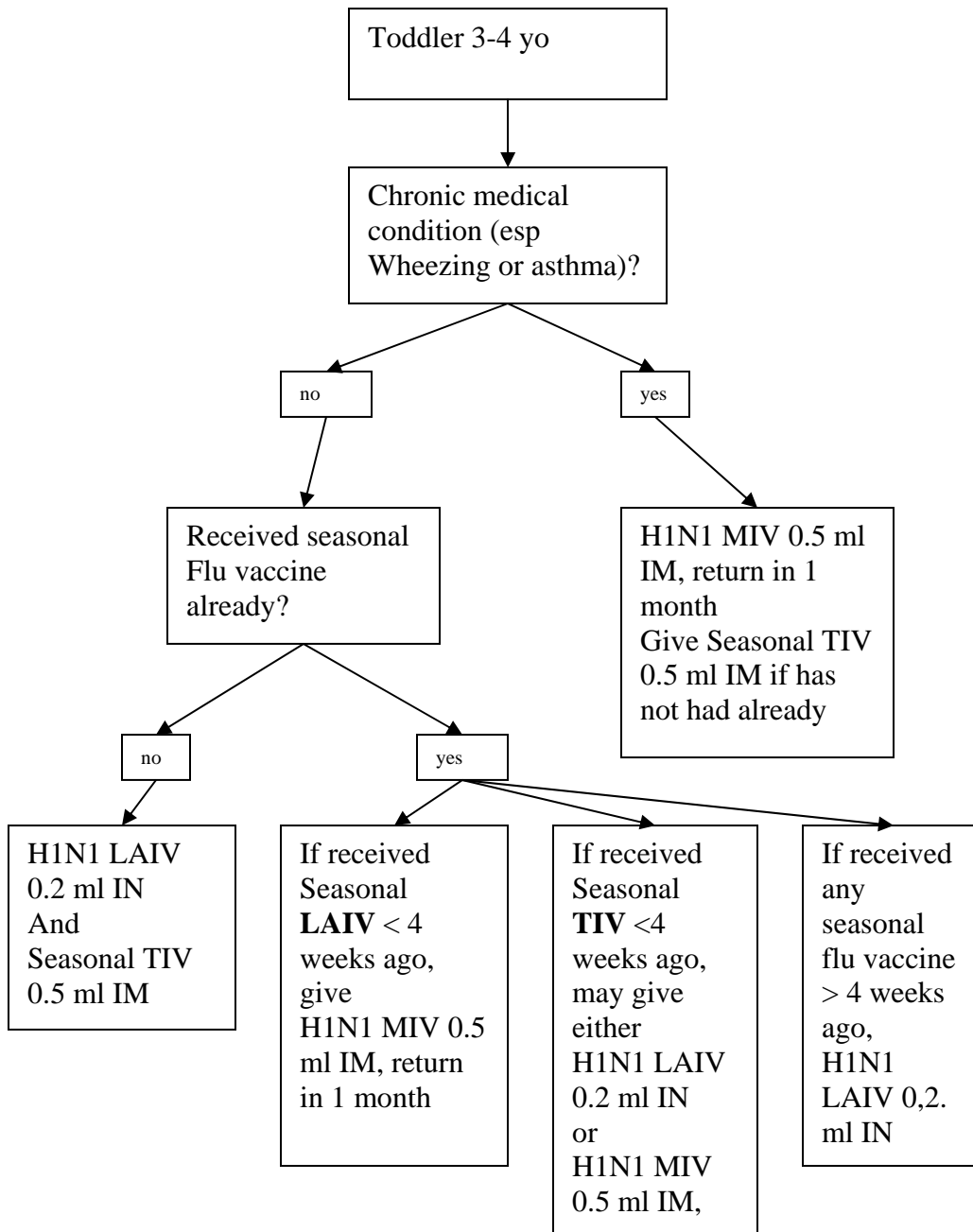
### GENERAL RULES:

- 1) Vaccine information statement **MUST** be given to the patient prior to receipt of the vaccine
- 2) **ALL** seasonal AND 2009 H1N1 vaccines **MUST BE ENTERED INTO THE RPMS SYSTEM** at the time of vaccine administration. (You should actually look at the imm record before you give the immunization to confirm what previous flu shots were given.)
- 3) **ALL PATIENTS SHOULD RECEIVE A FLU SHOT IMMUNIZATION CARD** specifying which vaccine(s) they received
- 4) **INJECTABLE** seasonal and 2009 H1N1 vaccine **CAN BE GIVEN ON THE SAME DAY**, different sites
- 5) One **INJECTABLE** and One **LAIV** of either seasonal or 2009 H1N1 **CAN** be given on the same day
- 6) You **CANNOT** give both **LAIV** 2009 H1N1 and Seasonal on the same day- they need to be separated by 4 weeks.

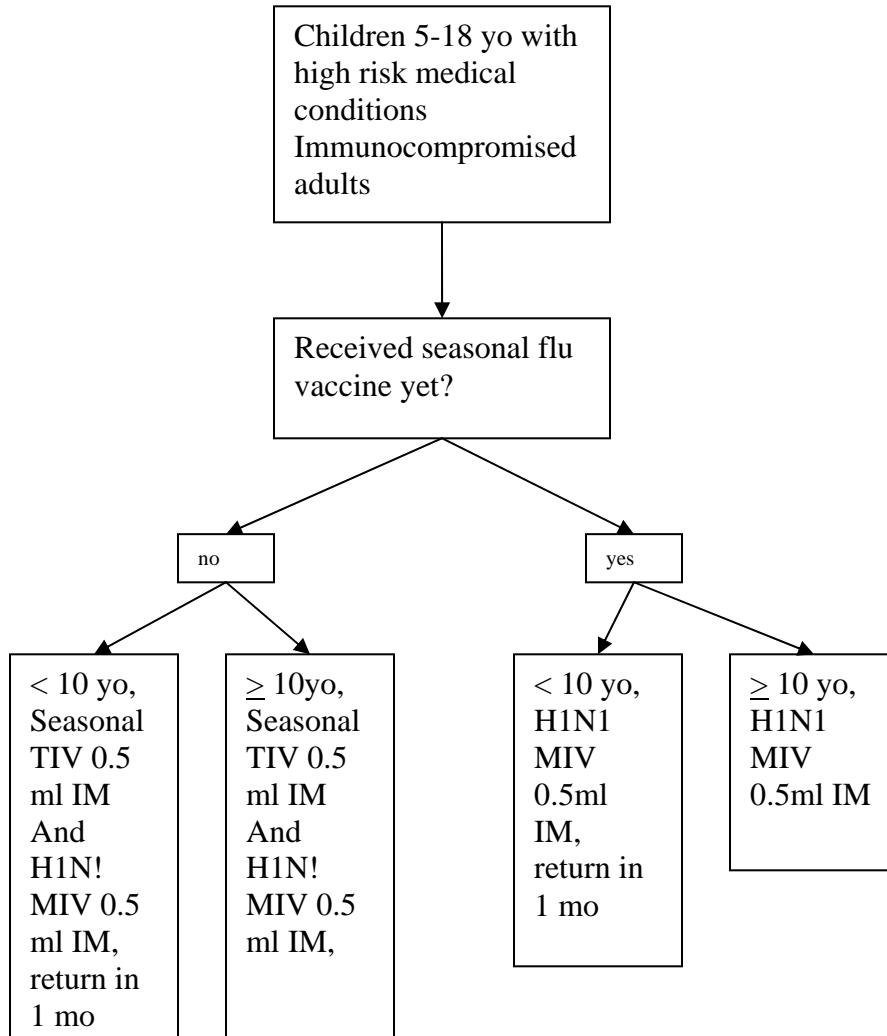
# Infants 6mo- 35mo old



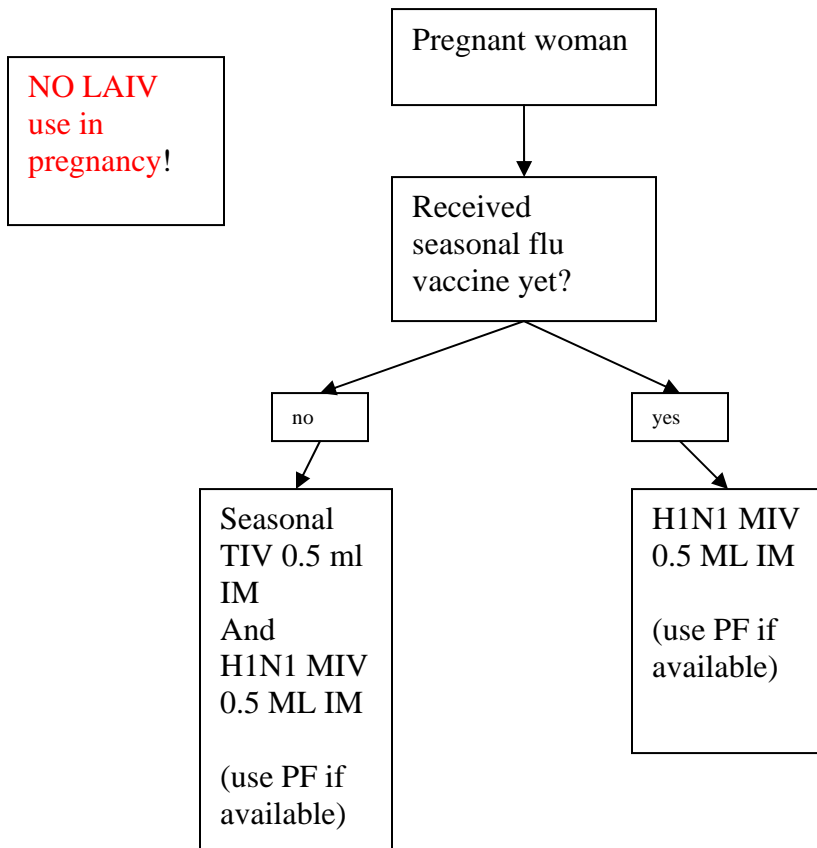
# Toddler 3-4 yo



Children 5-18 yo  
With high risk medical conditions  
Immunocompromised  
Adults



# Pregnant women



## Parents of infants < 6mo

